



**L8** SERIES

**LANBON**

# LCD DIMMER SWITCH

An unprecedented interactive experience

## LCD SMART SWITCH



2020 NEW





1

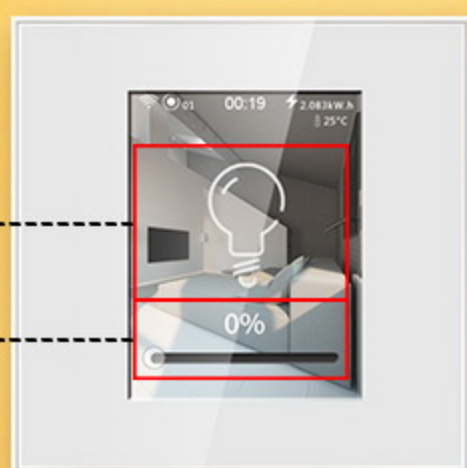
## Dimmer switch model

Press and hold the circle to control the brightness of the light.



NO/OFF

Light brightness



## Dimmer switch parameter

Rated load:200W

Load types:Incandescent lamp,LED lamp





# Super compatible



Comply with 90% kinds of lamp



Incandescent lamp



LED Lamp



Various type lamp



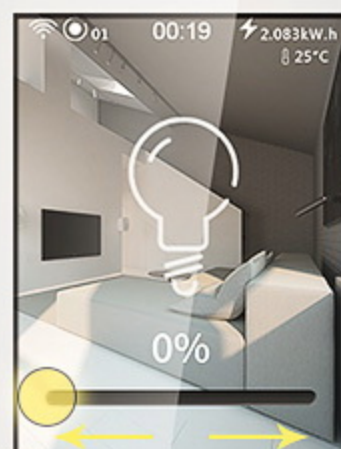




3

## Stepless dimmer

slide slightly to reach the comfortable brightness for you







## Scan QR code configuration network, more simple and fast

Using the global original scan code configuration, only one key to scan code, complete configuration, simple operation, stable, reliable.







5

## Super mutual control

The L8 switch have super mutual control function. The mutual control function can be set between any switch. max 3 group. Very easy to set up and use.



mutual control  
curtain switch

Mutual control wiring diagram

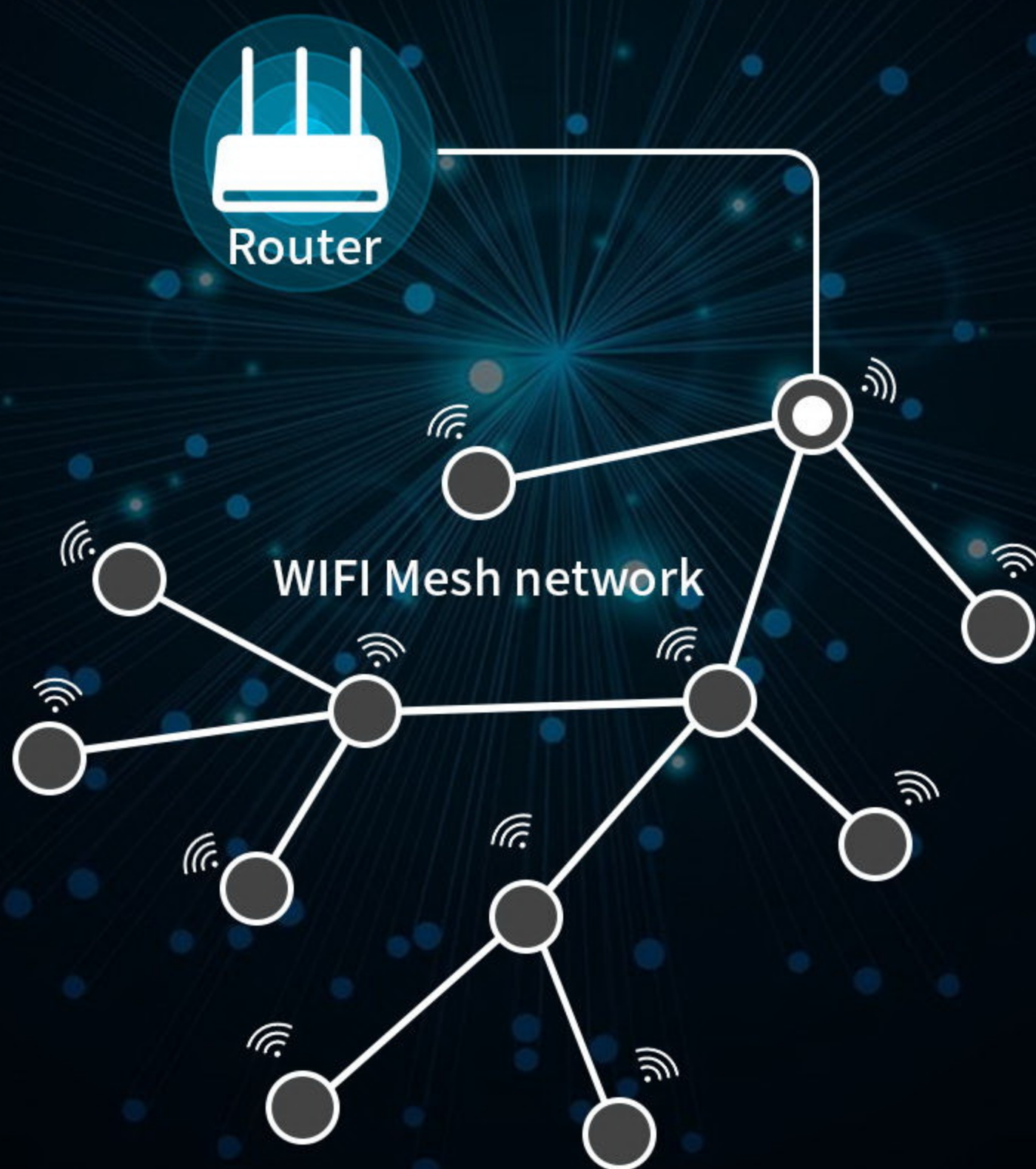






# WIFI-MESH Network More Faster and Stable

L8 system switch adopts the latest Google WIFI Mesh technology, WIFI automatic signal forwarding between switches, automatic networking, fast networking, simple operation, no need to arrange multiple AP or WIFI routers, the number of networking switches can reach 255 nodes, the signal can easily cover a variety of large or large office buildings.







## Warm and romantic atmosphere lamp effect, romantic full house

You can set a variety of atmosphere lamp, enjoy different lighting atmosphere in different life scenes







## High resolution LCD display

Capacitive touch screens are widely used in the smartphone era, and we have creatively applied this to auroral panels. Compared to traditional press button, the new touch buttons allow younger users to maintain an iPhone-like touch experience on the panel, sensitive and interactive.

Capacitive touch screen,  
sensitive to touch, strong  
sense of technology

High resolution LCD  
screen vivid color

ABS fireproof  
material





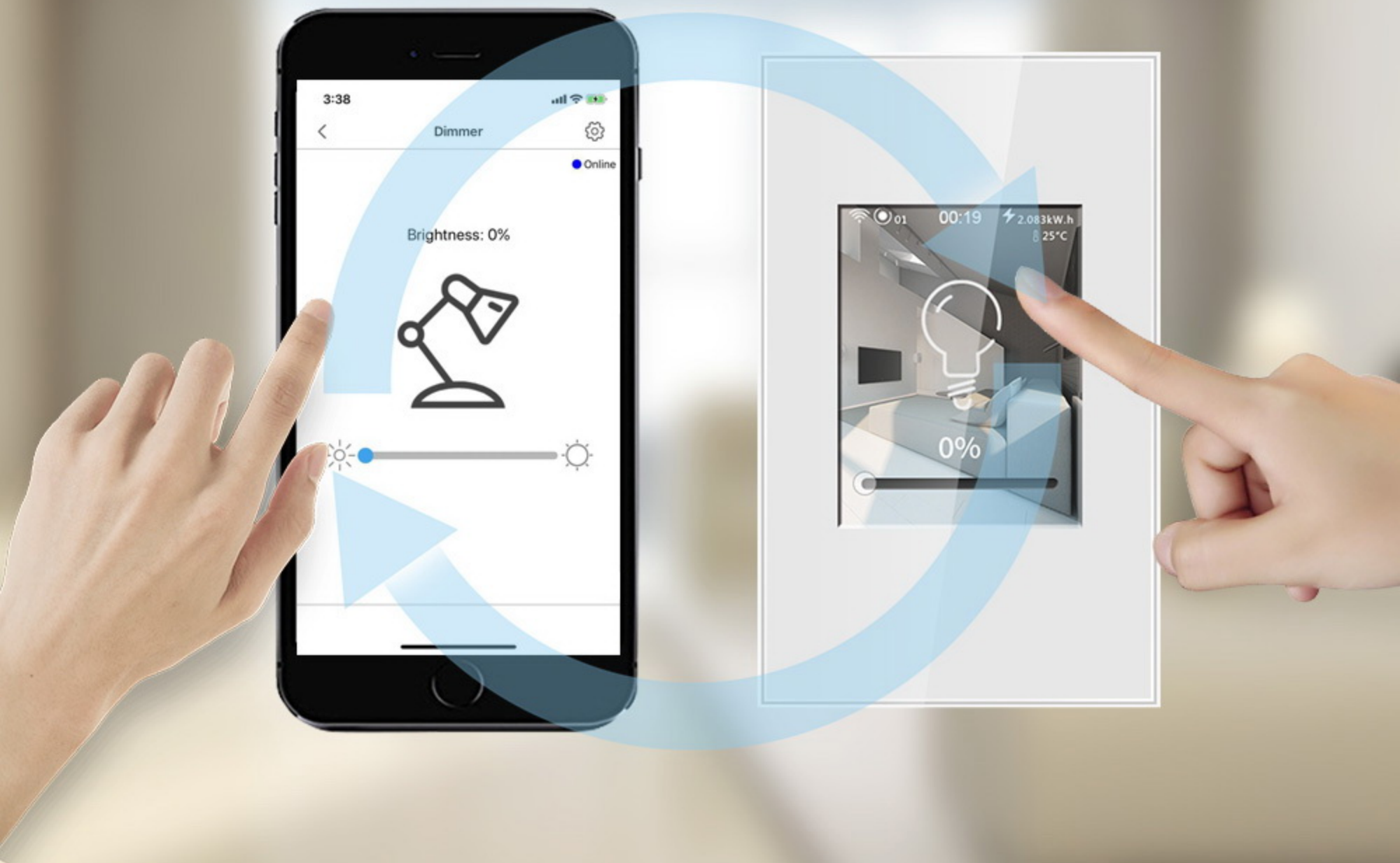


## State synchronization

The status synchronize automatically no matter operate on switch or Mobile App



Fully synchronized



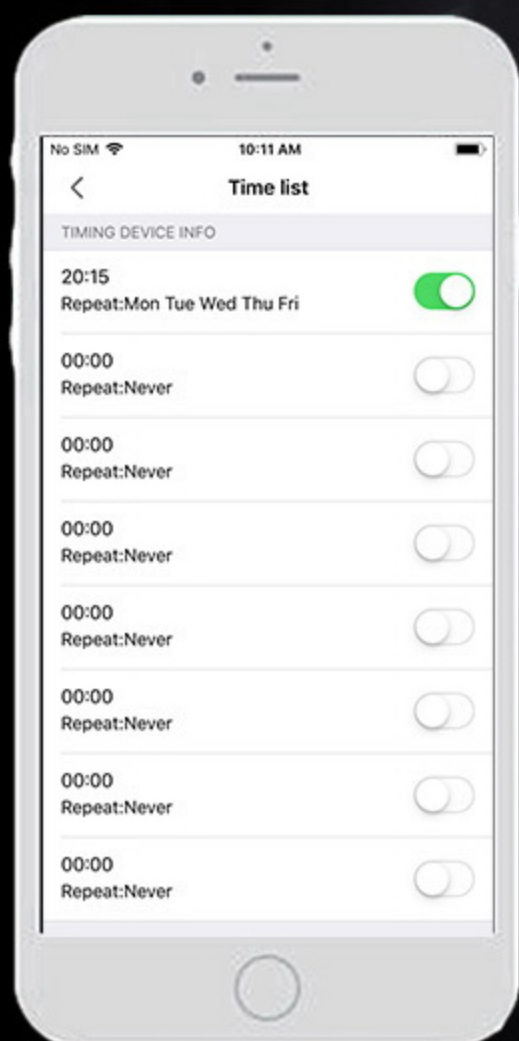




10

## 8 group timing

With a simple setup, you can turn on/off the entire house light through the mobile app before sleep, saving the trouble of getting off the bed. Between on/off, life is smart.



7:00 am

Get up mode

10:00pm

Go to sleep mode

9:00am

Leave home mode

6:00pm

Back home mode





# Delay function

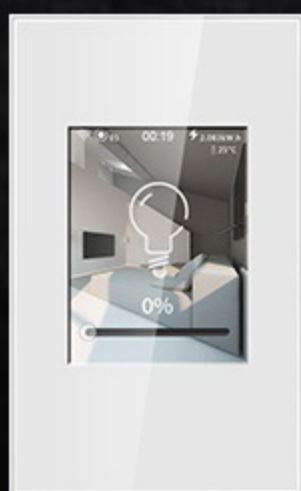
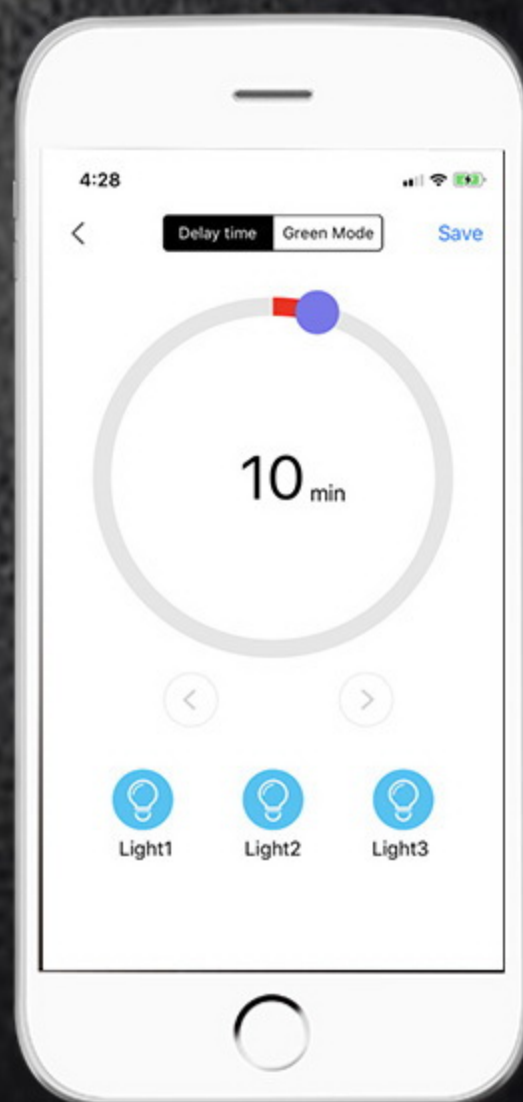
Delay function: Setting the time to start running the switch. That is, the switch will automatically turn on or off after a period of time, the delay function will be valid once for each setting.

7:00am

Set start time

7:10am

Turn off after  
10 mins







## Night mode

Night mode: After night mode is turned on, backlight of switch will automatically turn off, control tone become weaker. Night mode setting can be set for a certain time or all day, normally used for bedroom.



Weeken the switch  
control sound



Environmental  
protection and  
power saving



Turn off backlight  
automatically







13

## Wide range of application scenarios

High-end residence



High-end office



High-end hotel







14

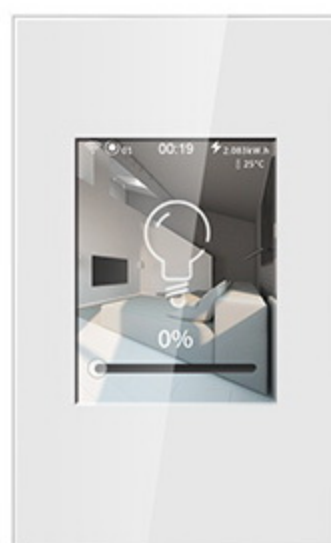
## Product information

### Product demo Product parameters

#### L8-HS (Dimmer switch)



EU standard-White



US standard-White



EU standard-Black



US standard-Black

#### UNIFIED PARAMETERS FOR EACH SWITCH

RATED LOAD:	100W
LOAD TYPES:	Incandescent lamp,LED lamp
WEIGHT:	0.3 kg
PRODUCT'S SIZE:	86 mm * 86 mm / 120 mm * 74 mm
PACKING BOX SIZE:	102.6 mm * 141 mm * 51.1 mm
PANEL:	Capacitive touch screen
BOTTOM MATERIALS:	Flame Retardant PC
RATED VOLTAGE:	AC 100-250V 50/60Hz
WIRELESS STANDARD:	IEEE 802.11 b/g/n
FREQUENCY RANGE:	2.405GHz~2.480GHz
RECEIVING SENSITIVITY:	-97dbm
OPERATING TEMPERATURE:	- 40 ° C ~ + 85 ° C.
RELATIVE HUMIDITY:	< 95%