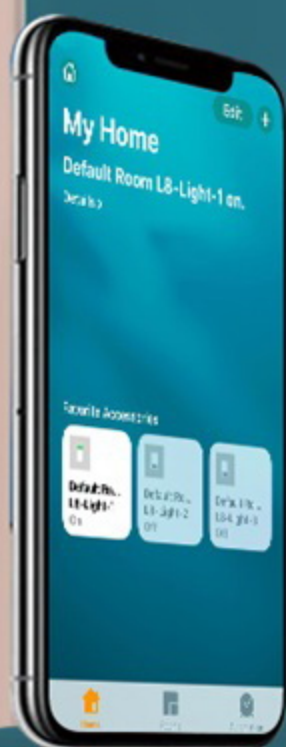


L8 SERIES

Suport HomeKit Smart Switch

support customize button icon. change name. 5 model in one switch



HOME KIT



2020 NEW



Intelligent Technology
Smart Housekeeper

High technology

Make real smart living for you



Ultimate integrated
wall interaction

Fragmented home interaction environment
become simple and beautiful



Interface setting

Beautiful and
elegant at a glance



Super mutual control

Any switch can be set to mutual
control up to three groups



Power consumption
statistics

Know power consumption
at a glance



Fully interconnected

WIFI-MESH network



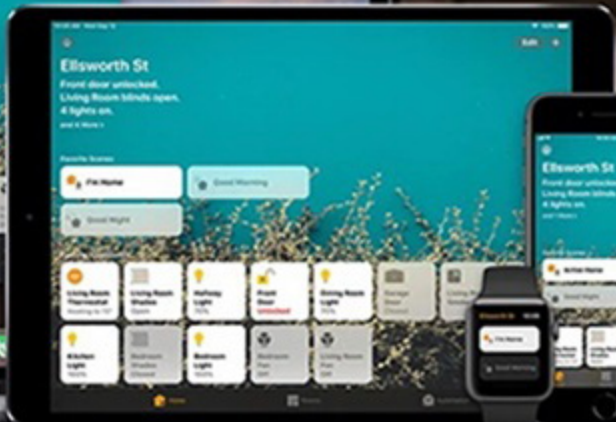
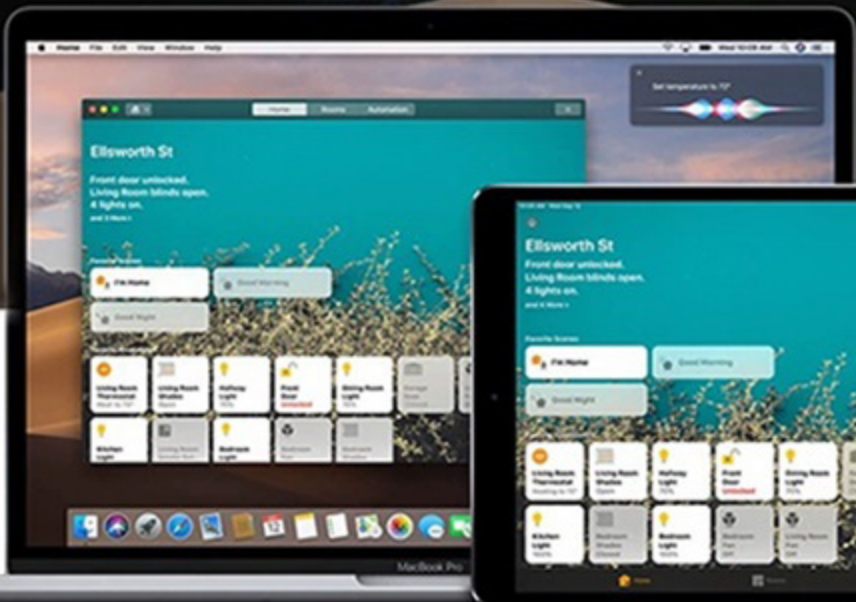
Scan code configuration

Scan QR code configuration network





Your home is under your command.





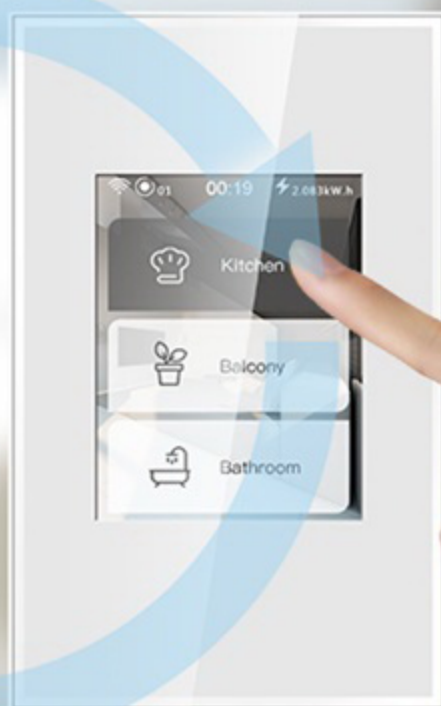
1

State synchronization

The status synchronize automatically no matter operate on switch or Mobile App



Fully synchronized





2

Scan QR code configuration network, more simple and fast

Using the global original scan code configuration, only one key to scan code, complete configuration, simple operation, stable, reliable.





3

The switch model is freely defined, create more possibilities

5 kinds of models in one switch

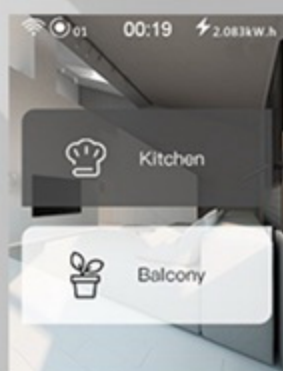
L8 intergrate 1/2/3gang light switch,curtain switch,scene switch, through setting by LCD touch screen.

The dealer only need to order one item. Also the household only need to count the number of the switch hole,no need to do classified.

sdclassclassified



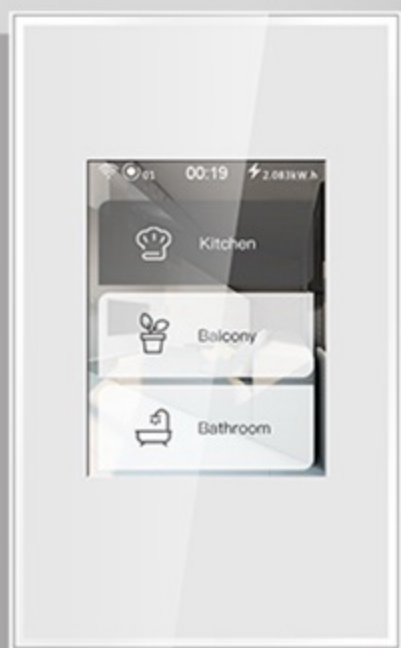
1 gang switch



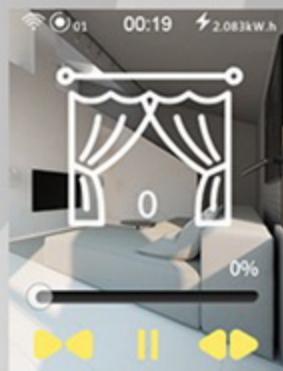
2 gang switch



3 gang switch



3 gang switch



Curtain switch



4

1 gang,2 gang,3 gang switch model

Simply click the button on the switch to turn it on or off,Very convenient and fast



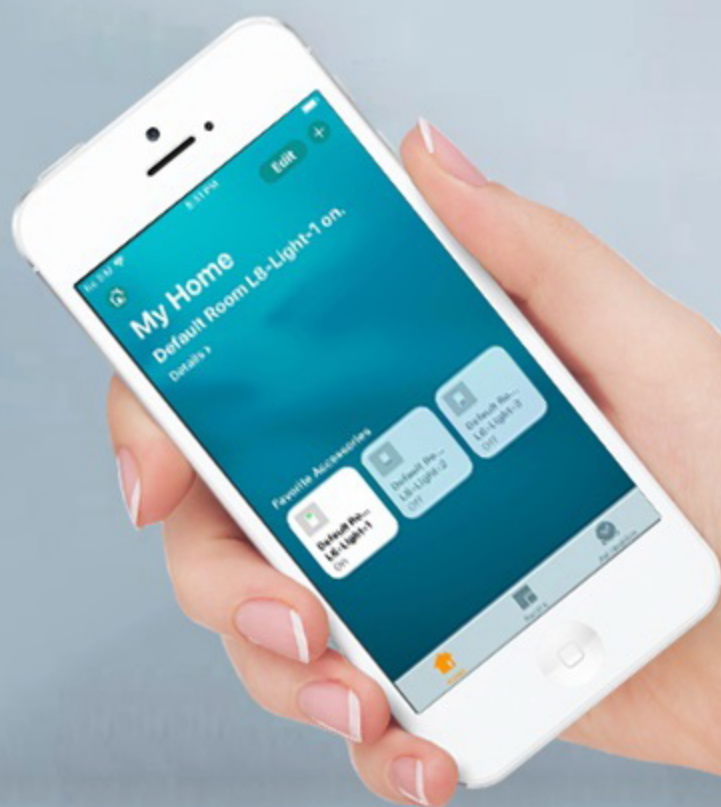
1 gang switch



2 gang switch



3 gang switch



1gang,2gang,3gang switch parameter

Rated load:200W/GANG(single switch)

Load types:Incandescent lamp,energy-saving lamps,Fluorescent lamp



5

Curtain switch model

Adjust by percentage

Button control



Curtain switch parameter

Rated load:200W

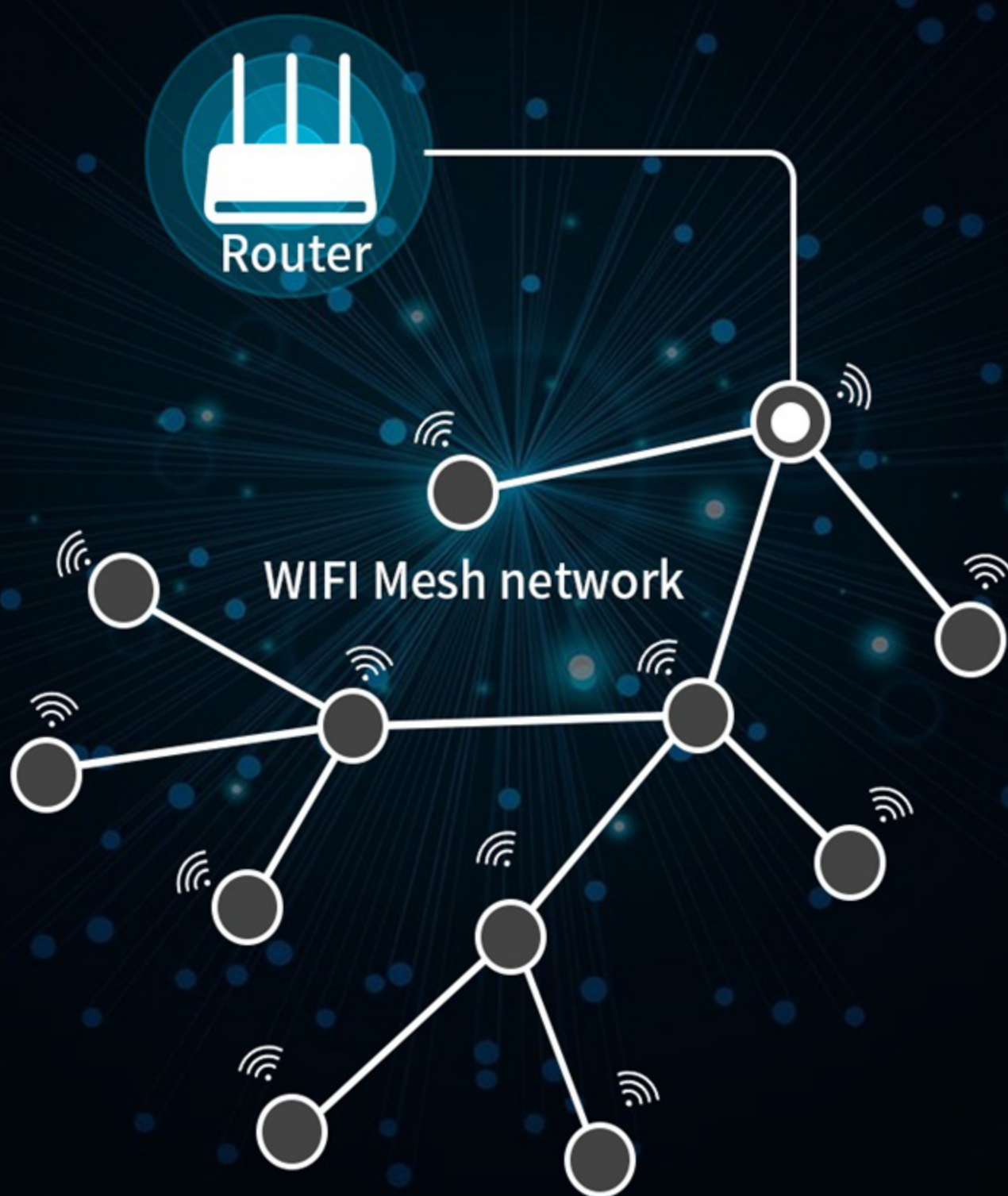
Load types:Horizontal curtain motor,
vertical curtain motor,electric door,etc.



6

WIFI-MESH Network, more faster and stable.

L8 system switch adopts the latest Google WIFI Mesh technology, WIFI automatic signal forwarding between switches, automatic networking, fast networking, simple operation, no need to arrange multiple AP or WIFI routers, the number of networking switches can reach 255 nodes, the signal can easily cover a variety of large or large office buildings.





7

The interface display free to set, stay personalized

L8 switch users can set the name of each load, icons support multiple languages and pattern, as well as a variety of styles, simple but beautiful.

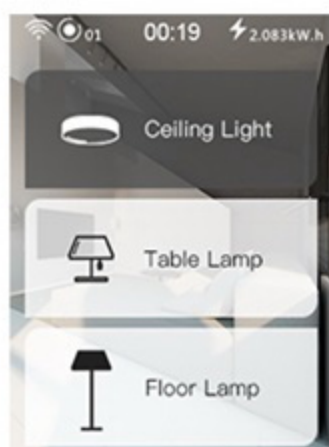
Change style on switch



Change style on App



3 style for choose



Simple



lovely



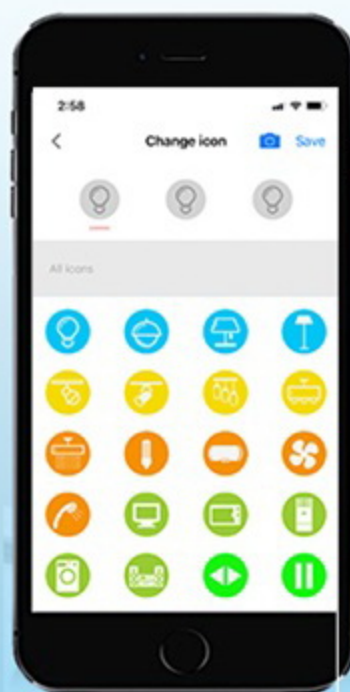
High end



Change button name and Icon

The name and icon change on app will synchronize to switch, so just set on app is ok

1 Change icon



2 Change name





Warm and romantic atmosphere lamp effect, romantic full house

You can set a variety of atmosphere lamp, enjoy different lighting atmosphere in different life scenes





10

High resolution LCD display

Capacitive touch screens are widely used in the smartphone era, and we have creatively applied this to auroral panels. Compared to traditional press button, the new touch buttons allow younger users to maintain an iPhone-like touch experience on the panel, sensitive and interactive.

Capacitive touch screen,
sensitive to touch, strong
sense of technology

High resolution LCD
screen vivid color

ABS fireproof
material

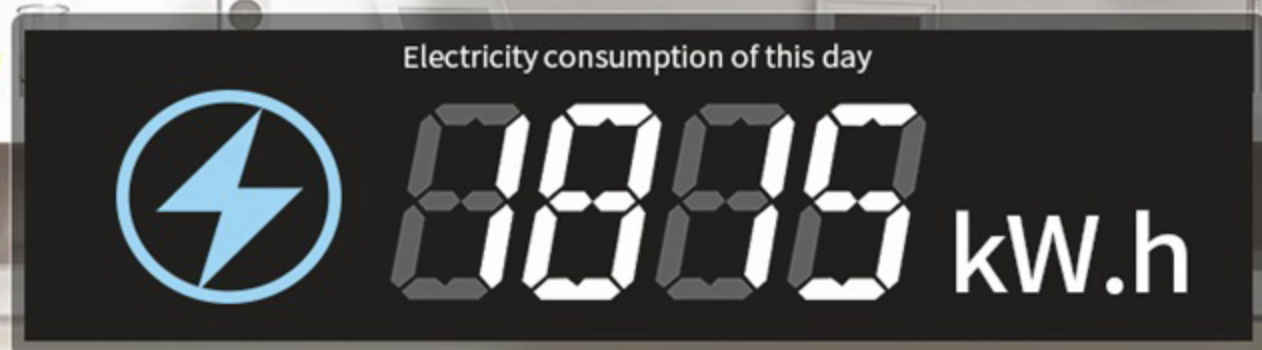




11

Statistical power consumption see power consumption at a glance

The traditional wall switch is just a Mechanical structure, it can not show and monitor the device power consumption. L8 switch build in precise power detection circuit. Every switch can show the power consumption of the device it connected. What' s more , can show the power consumption of whole house. All the data will keep for 2 years.



12

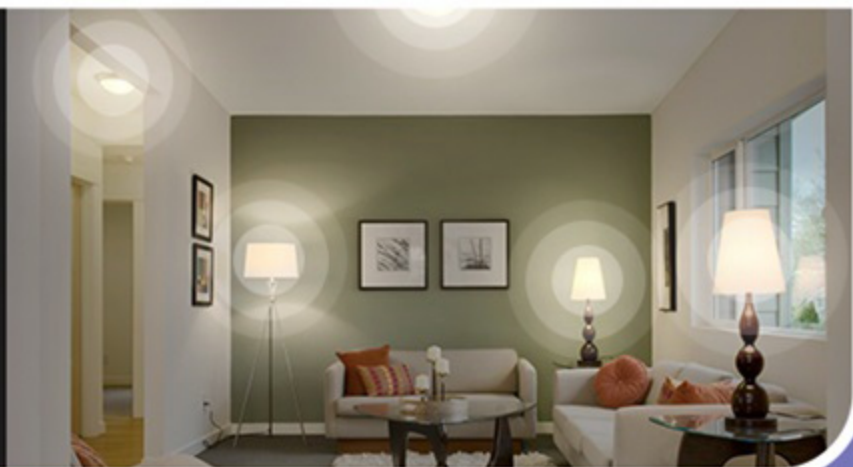
Scene function

Scene setting function: User can create a scene in the App, one scene is mainly used to control multiple switches(switch can be arbitrarily added to a scene), scene function need to be added on the App. The advantage of the scene function is that you can turn on all the switches with one click. You can also set a scene via Siri on Iphone, no need to open the App.



Home scene

All light on



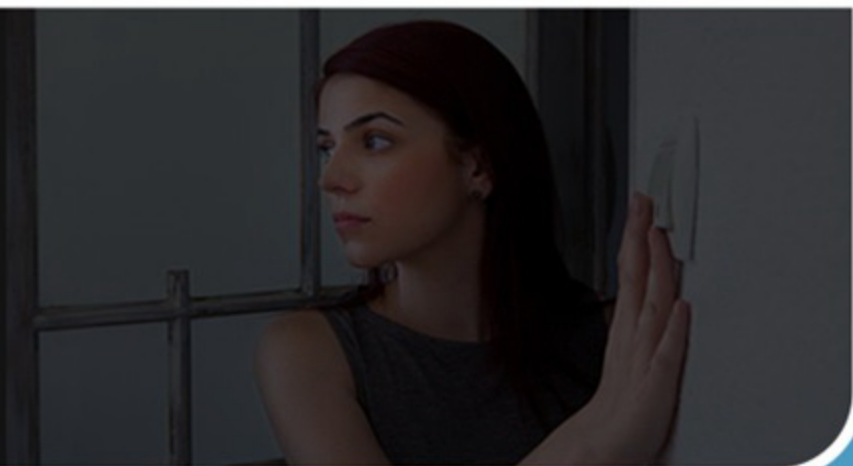
Party scene

Colorfull light on



Leave home scene

All devices turn off



More scenes for your choice





13

Wide range of application scenarios

High-end residence



High-end office



High-end hotel





14

Product information

Product demo Product parameters

L8-HS (1/2/3 gang light switch、Curtain switch、Scene switch)



EU standard-White



US standard-White



EU standard-Black



US standard-Black

1, 2, 3 GANG LIGHT SWITCH

RATED LOAD: 200W / GANG (single switch)

LOAD TYPE: Incandescent lamp, energy-saving lamps, Fluorescent lamp

CURTAIN SWITCH

RATED LOAD: 200W

LOAD TYPE: Horizontal curtain motor, vertical curtain motor, electric door, etc.

UNIFIED PARAMETERS FOR EACH SWITCH

WEIGHT: 0.3 kg

PRODUCT'S SIZE: 86 mm * 86 mm / 120 mm * 74 mm

PACKING BOX SIZE: 102.6 mm * 141 mm * 51.1 mm

PANEL: Capacitive touch screen

BOTTOM MATERIALS: Flame Retardant PC

RATED VOLTAGE: AC 100-250V 50/60Hz

WIRELESS STANDARD: IEEE 802.11 b/g/n

FREQUENCY RANGE: 2.405GHz~2.480GHz

RECEIVING SENSITIVITY: -97dbm

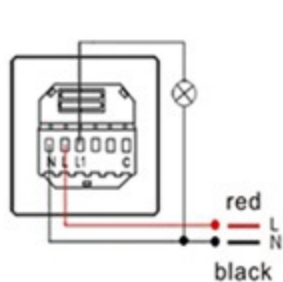
OPERATING TEMPERATURE: - 40 ° C ~ + 85 ° C.

RELATIVE HUMIDITY: < 95%

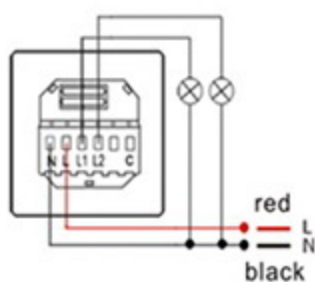
package



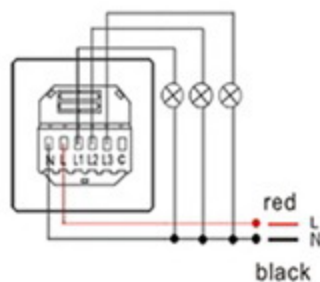
wiring diagram



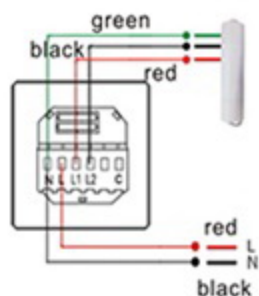
L8-HS (1gang light switch)



L8-HS (2gang light switch)



L8-HS (3gang light switch)



L8-HS (Curtains Control Switch)

size diagram

